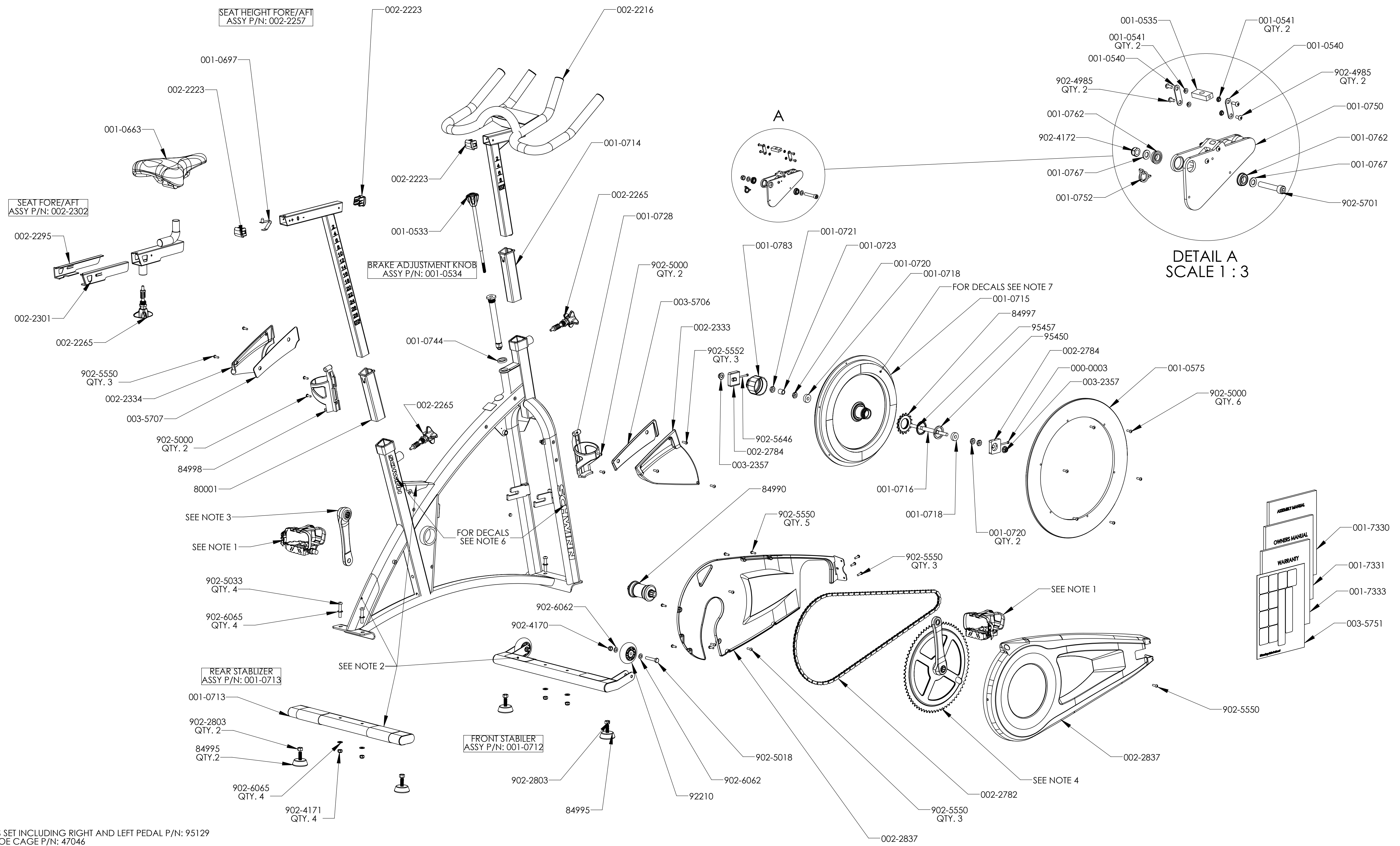


REVISIONS			
REV.	DESCRIPTION	DATE	APPROVED
A	ORIGINATED	4/7/11	KDH



- NOTES:
- PEDALS SOLD AS SET INCLUDING RIGHT AND LEFT PEDAL P/N: 95129
-REPLACEMENT TOE CAGE P/N: 47046
-REPLACEMENT TOE STRAP P/N: 57880
 - P/N: 005-0007 STRETCH PADS ONLY AVAILABLE AS FULL KIT
 - USE 80035 FOR BIKES WITH SERIAL NUMBERS CONTAINING 100177TON
-USE 002-2780 FOR BIKES WITH SERIAL NUMBERS CONTAINING 100177GIA
-SEE SB-0003
 - USE 005-0004 FOR BIKES WITH SERIAL NUMBERS CONTAINING 100177TON
-USE 002-2779 FOR BIKES WITH SERIAL NUMBERS CONTAINING 100177GIA
-SEE SB-0003
 - FRAME DECALS ONLY AVAILABLE AS KIT P/N: 902-6066
 - DECALS FOR FLY WHEEL ONLY AVAILABLE SEPARATELY P/N: 003-5670 QTY. 1, P/N: 003-5549 QTY. 2, P/N: 003-5819 QTY. 1, P/N: 003-5558 QTY. 2

MODELED: J.WATT 1/28/2010 DRAWN: KDH 4/7/11		NAME: J.WATT DATE: 1/28/2010	
ENG APPR: KDH CL. APPR:		PRIMARY DIMENSIONS GIVEN IN MILLIMETERS SECONDARY DIMENSIONS GIVEN IN INCHES	
MATERIAL: SEE NOV PARTS		TOLERANCES: ANGULAR: ± 1° ONE PLACE DECIMAL: ± .3 TWO PLACE DECIMAL: ± .15 WHOLE MEASUREMENTS: ± .1	
COLOR:		SEE DWG. NO. 001-0550 WBOM	REV. A
FINISH:		SCALE: 1:6	WEIGHT:

PROPRIETARY AND CONFIDENTIAL
 THE INFORMATION CONTAINED IN THIS DRAWING IS THE SOLE PROPERTY OF SCHWINN BICYCLES OR CORE FITNESS. ANY REPRODUCTION IN PART OR AS A WHOLE WITHOUT THE WRITTEN PERMISSION OF SCHWINN BICYCLES OR CORE FITNESS IS PROHIBITED.

StarMaster
SCHWINN AC CLASSIC FULL ASSY