



Red: PAINTED ITEMS
Blue: KITS

1. All labeled components are to be assembled before shipment unless otherwise noted.
2. All bearings are to be pressed in with force applied to outer ring only.
3. All hardware to be torqued to specs listed in chart below.
4. Special notes if any are shown below.



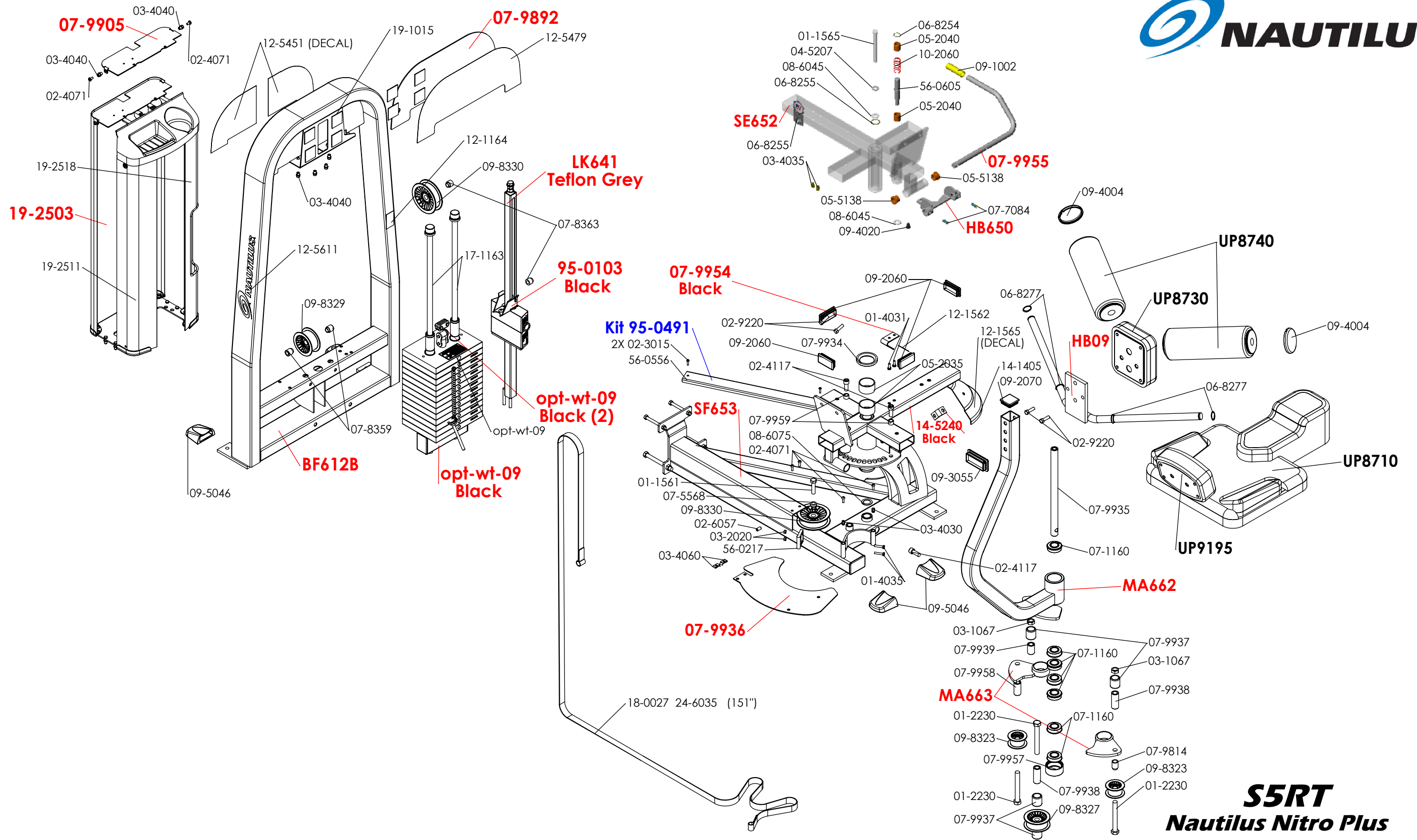
Customer Service & Parts 800/ 235-2233
 General Parts Requests: parts@medfitsys.com
 Field Service Requests: servicerequest@medfitsys.com
 GSA Parts Requests: gsa@medfitsys.com
 Med-Fit Systems, Inc. 800/ 831-7665

www.medfitsystems.com

NITRO PLUS ROTARY TORSO **S5RT**

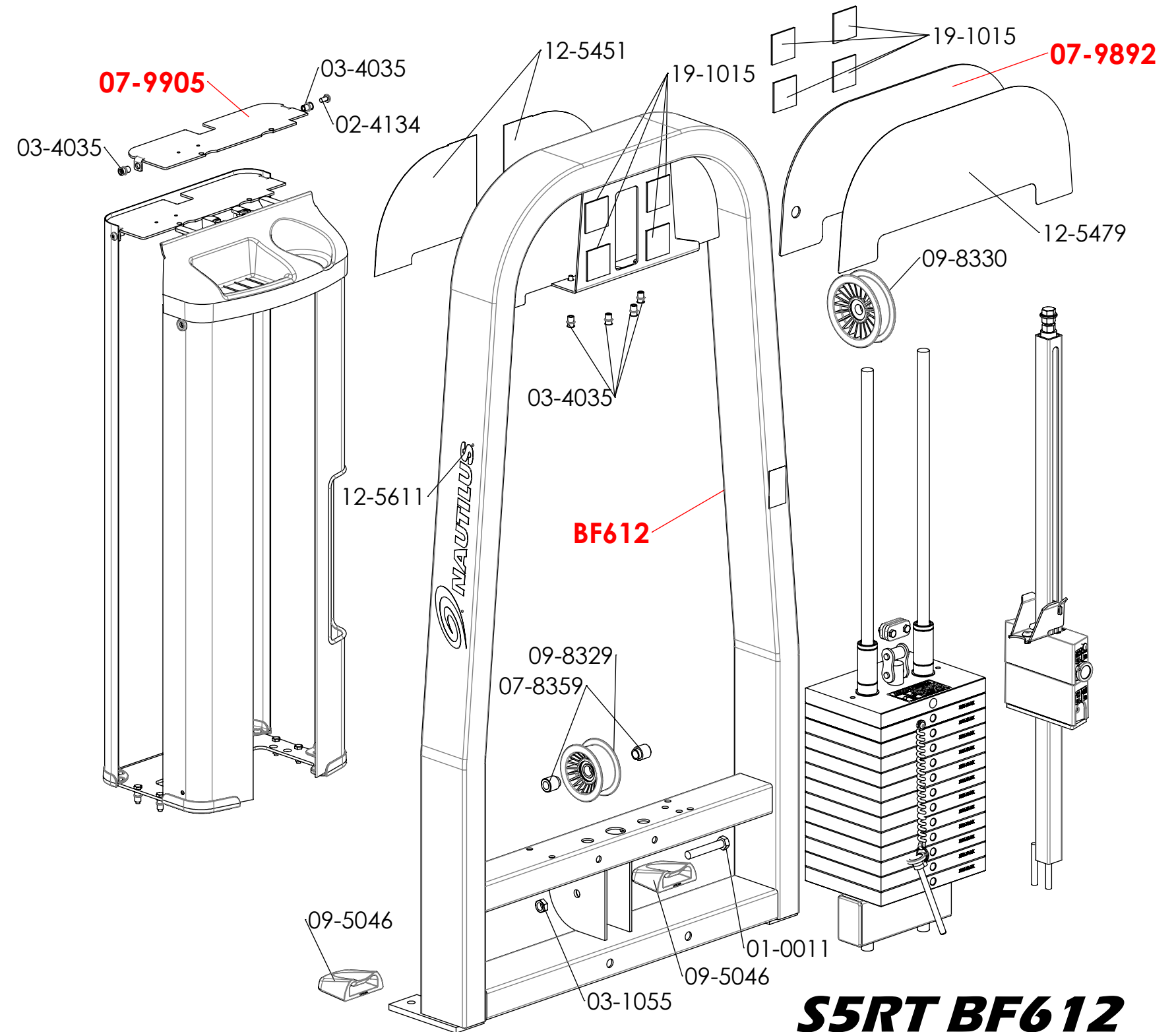
REV J

Bolt Torque Specifications		
Size	Grade 5	Grade 8
	Torque (ft-lbs)	Torque (ft-lbs)
1/4-20	8	12
1/4-28	10	14
5/16-18	17	25
3/8-16	30	45
7/16-14	50	70
1/2-13	75	110
1/2-20	90	120
5/8-11	150	220
5/8-18	180	240



S5RT
Nautilus Nitro Plus
ROTARY TORSO
Parts Diagram

Number	S5RT/QTY.	DESCRIPTION
	1	
01-0011	1	1/2 -13 UNC x 3 Bolt
01-1105	1	3/8 -16 UNC x 1 1/2 Bolt
01-1321	1	1/2 -13 UNC x 2 1/2 Bolt
02-4134	4	1/4 -20 UNC x 1/2" SCREW PHP SELF THREADING
03-1055	2	1/2" Nylon Insert Lock Nut-Thin
03-4035	6	1/4-20 INSERT 11/16" LONG
07-8359	2	IDLER PULLEY SPACER
07-8363	2	IDLER PULLEY SPACER
07-9459	1	PLACARD SHIELD
07-9528	1	ROM MOUNT S3AA
07-9892	1	S5AA PLACARD SHIELD
07-9905	1	S5AA TOP SHIELD
07-9912	1	BOLT ON ADD-ON MOUNT
07-9990	1	Weight Stack Shield Assy
09-5046	2	Nitro Plus Footpad
09-8018	2	GUIDE ROD BUSHING
09-8329	1	WIDE PULLEY 3" DIA
09-8330	1	REDIRECTIONAL PULLEY 4"
12-1164	1	WARNING DECAL, MINI WEIGHT SELECTOR PIN
12-5451	1	S3AA/RT BACK PLACARD (PAIR) (NEW LOGO)
12-5479	1	S5RT PLACARD FRONT (NEW LOGO)
12-5611	1	Nautilus Transfer Decal - Large BLACK
17-1163	2	GUIDE ROD
19-1015	8	2" Square Duo-Loc
48-1095	1	TREAD STRIP ARMOR
95-0102 Painted	1	SHIELD ASSEMBLY
95-0103	1	INCREMENTAL 5 lb. WEIGHT SYSTEM
BF612B	1	NITRO PLUS AA BACKFRAME
OPT-WT-09	1	WEIGHTSTACK ASSEMBLY #09



S5RT BF612 S5RT Weight Frame Parts List



Red: PAINTED ITEMS
Blue: KITS

1. All labeled components are to be assembled before shipment unless otherwise noted.
2. All bearings are to be pressed in with force applied to outer ring only.
3. All hardware to be torqued to specs listed in chart below.
4. Special notes if any are shown below.



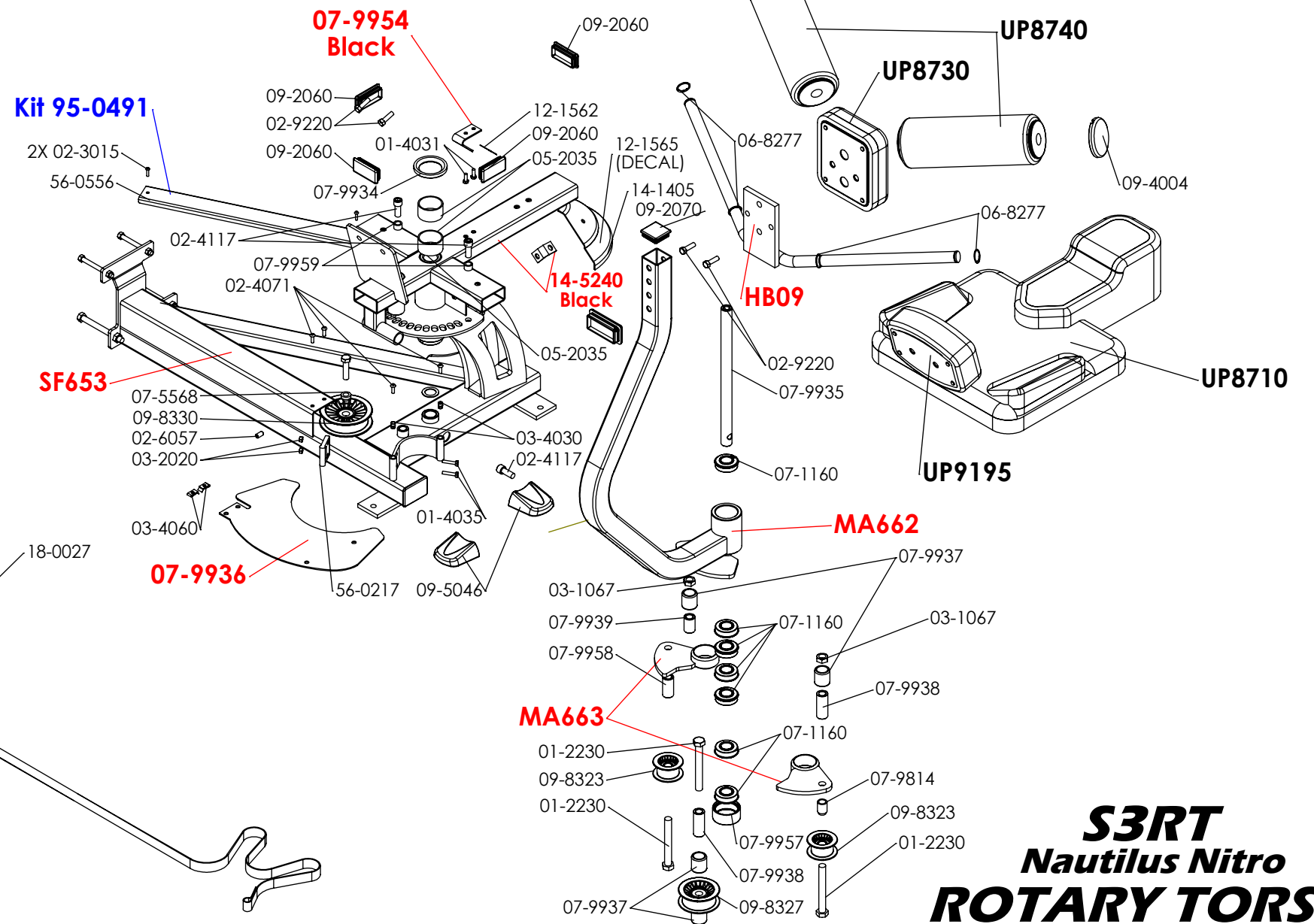
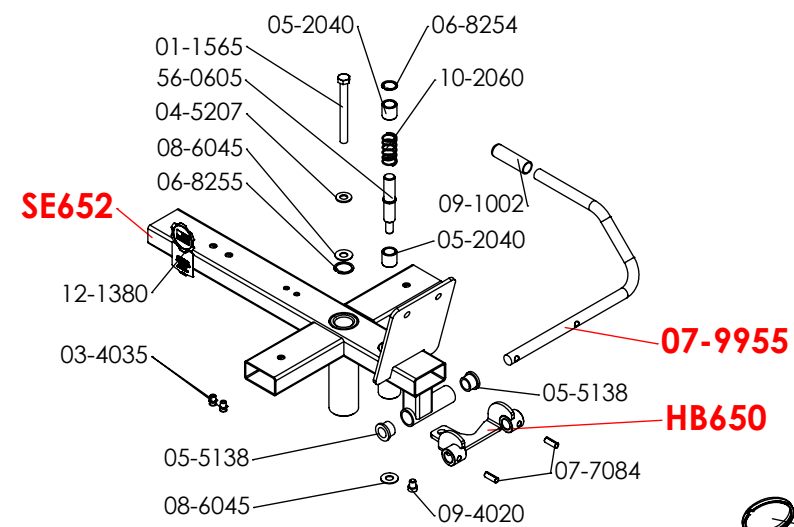
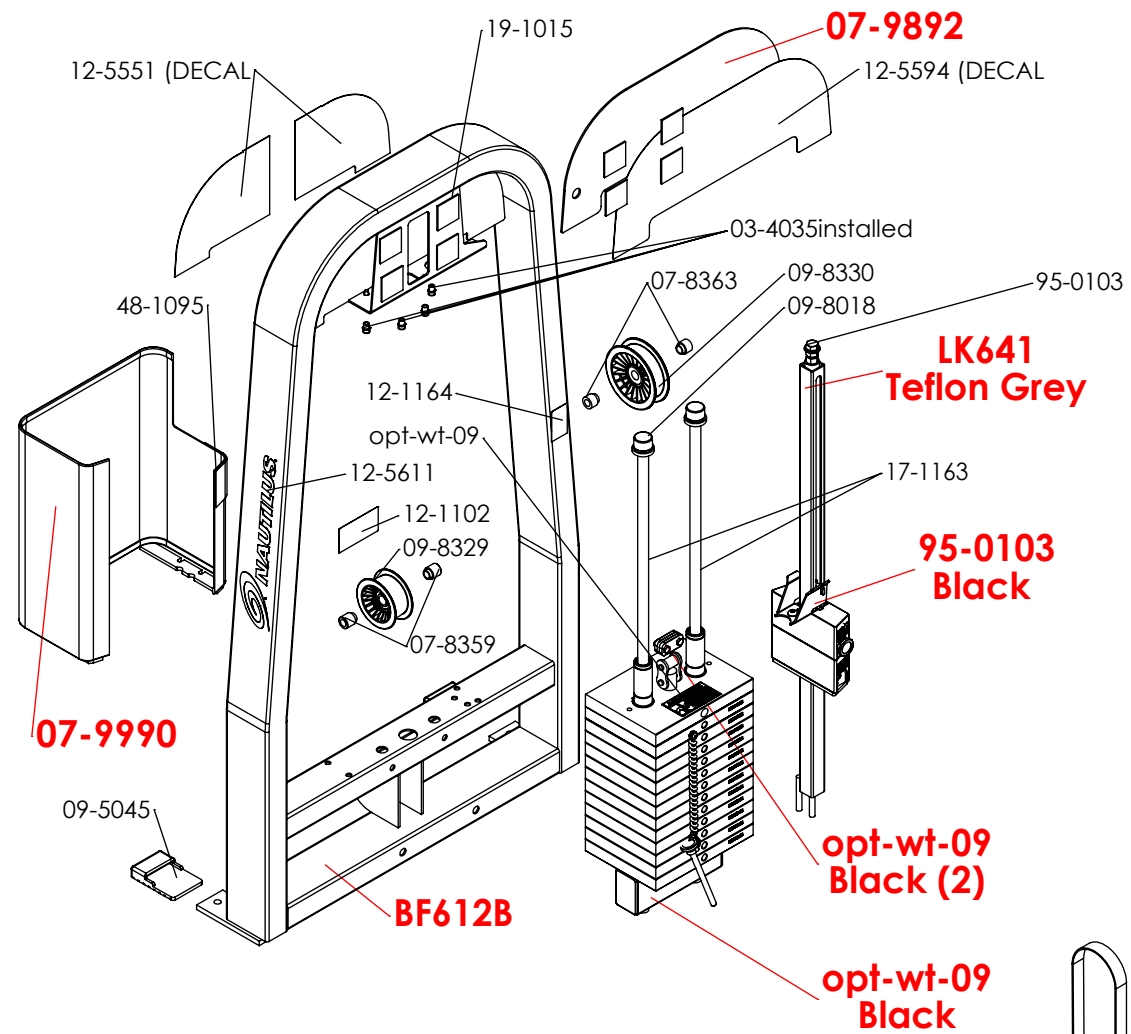
Customer Service & Parts 800/ 235-2233
 General Parts Requests: parts@medfitsys.com
 Field Service Requests: servicerequest@medfitsys.com
 GSA Parts Requests: gsa@medfitsys.com
 Med-Fit Systems, Inc. 800/ 831-7665

www.medfitsystems.com

S3RT
NITRO ROTARY TORSO
S3RT

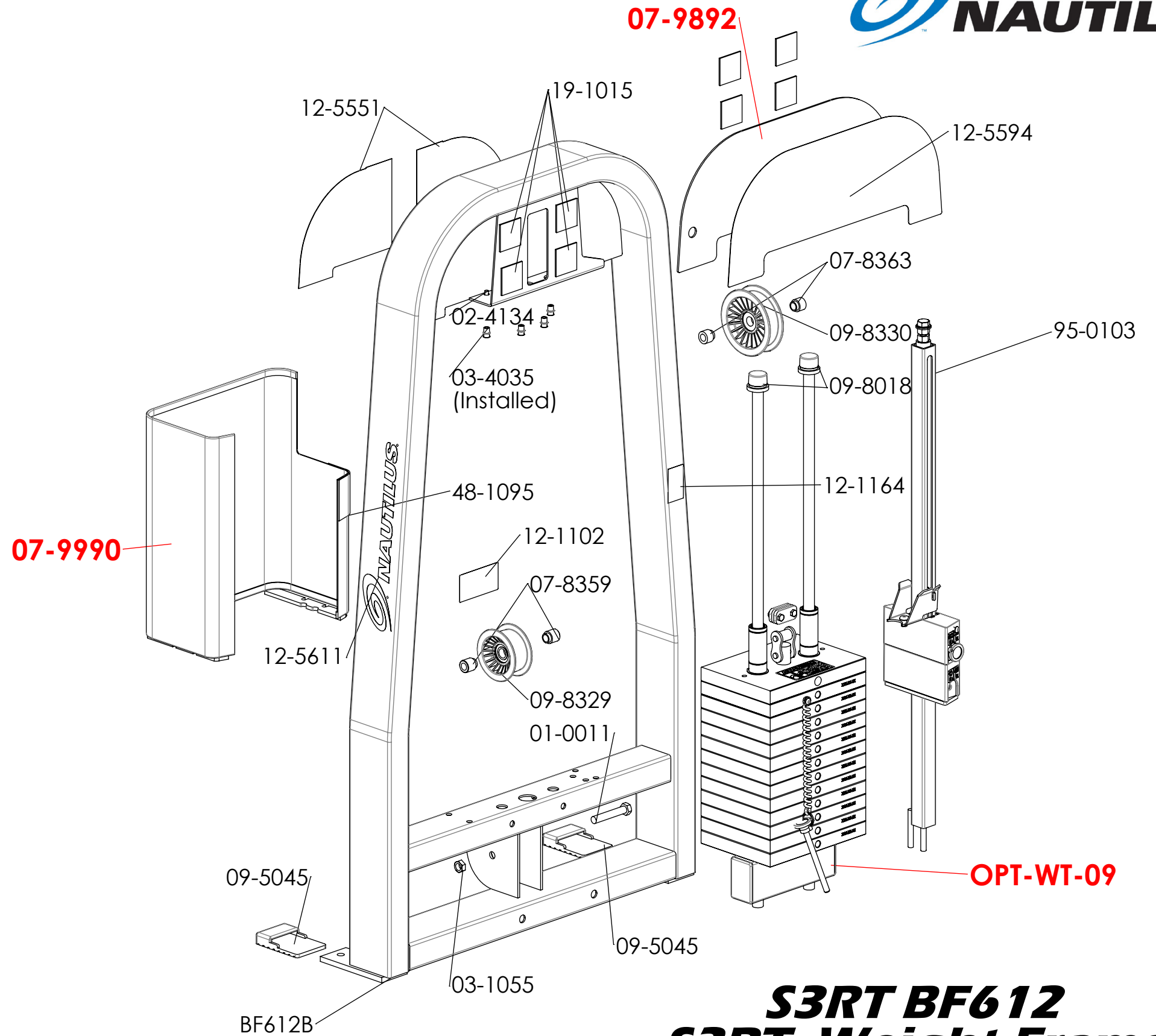
Bolt Torque Specifications		
Size	Grade 5	Grade 8
	Torque (ft-lbs)	Torque (ft-lbs)
1/4-20	8	12
1/4-28	10	14
5/16-18	17	25
3/8-16	30	45
7/16-14	50	70
1/2-13	75	110
1/2-20	90	120
5/8-11	150	220
5/8-18	180	240

REV J

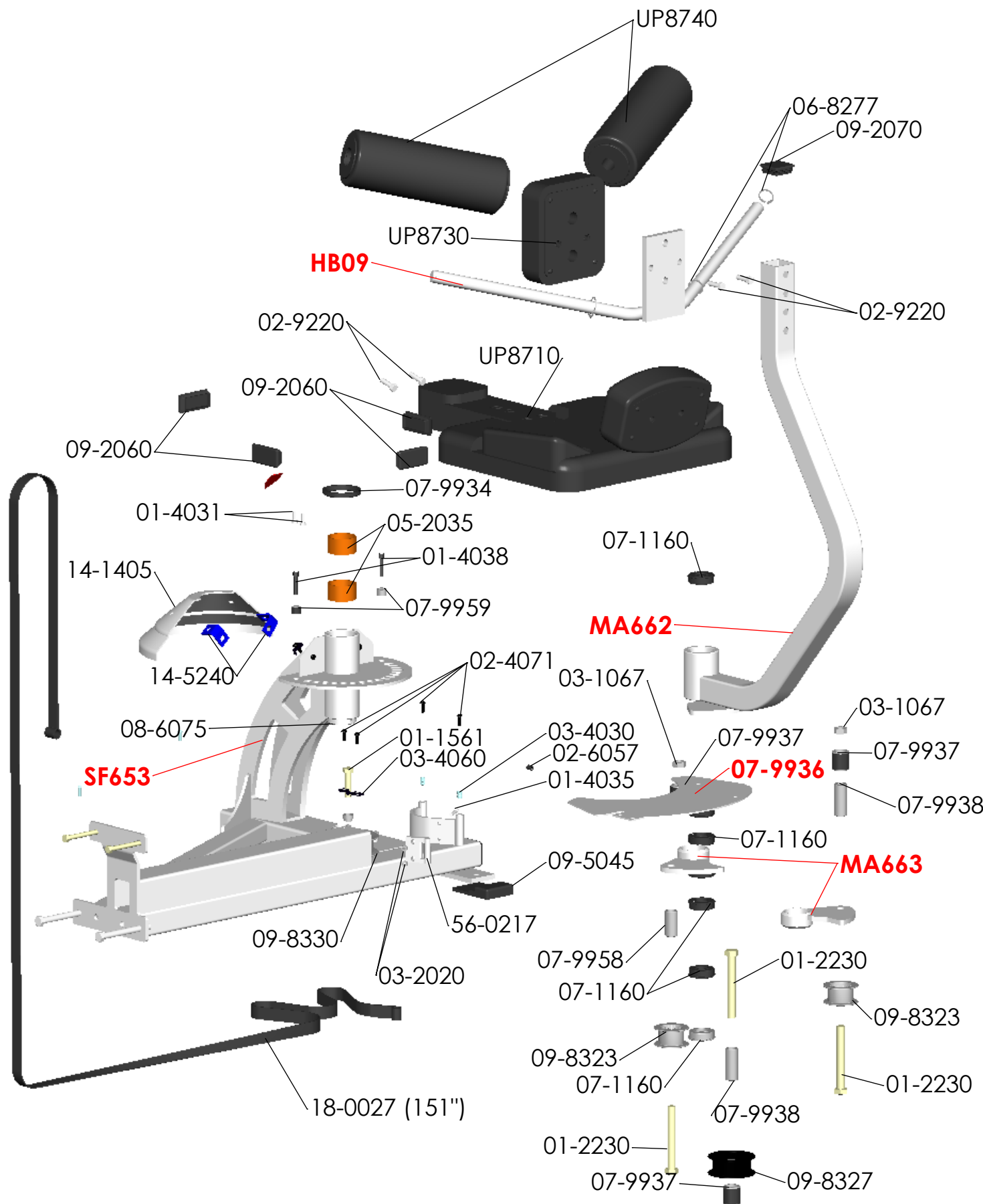


S3RT
Nautilus Nitro
ROTARY TORSO
Parts Diagram

Number	S3RT/QTY.	DESCRIPTION
02-4134	2	1/4 -20 UNC x 1/2" SCREW PHP SELF THREADING
03-1055	2	1/2" Nylon Insert Lock Nut-Thin
03-4035	4	1/4-20 INSERT 11/16" LONG
07-8359	2	IDLER PULLEY SPACER
07-8363	2	IDLER PULLEY SPACER
07-9459	1	PLACARD SHIELD
07-9528	1	ROM MOUNT S3AA
07-9892	1	S5AA PLACARD SHIELD
07-9912	1	BOLT ON ADD-ON MOUNT
07-9990	1	Weight Stack Shield Assy
09-5045	2	NITRO SERIES MOLDED FOOTPAD
09-8018	2	GUIDE ROD BUSHING
09-8329	1	WIDE PULLEY 3" DIA
09-8330	1	REDIRECTIONAL PULLEY 4"
12-1102	1	WEIGHTSTACK 4 3/4 PIN WARNING DECAL
12-1164	1	WARNING DECAL, MINI WEIGHT SELECTOR PIN
12-5551	1	S5AA/RT BACK PLACARD (PAIR) (NEW LOGO)
12-5594	1	S3RT PLACARD FRONT (NEW LOGO)
12-5611	1	Nautilus Transfer Decal - Large BLACK
17-1163	2	GUIDE ROD
19-1015	8	2" Square Duo-Loc
48-1095	1	TREAD STRIP ARMOR
95-0103	1	INCREMENTAL 5 lb. WEIGHT SYSTEM
BF612B	1	NITRO PLUS AA BACKFRAME
OPT-WT-09	1	WEIGHTSTACK ASSEMBLY #09
01-0011	1	1/2 -13 UNC x 3 Bolt
01-1321	1	1/2 -13 UNC x 2 1/2 Bolt
01-1105	1	3/8 -16 UNC x 1 1/2 Bolt



S3RT BF612
S3RT Weight Frame
Parts Diagram

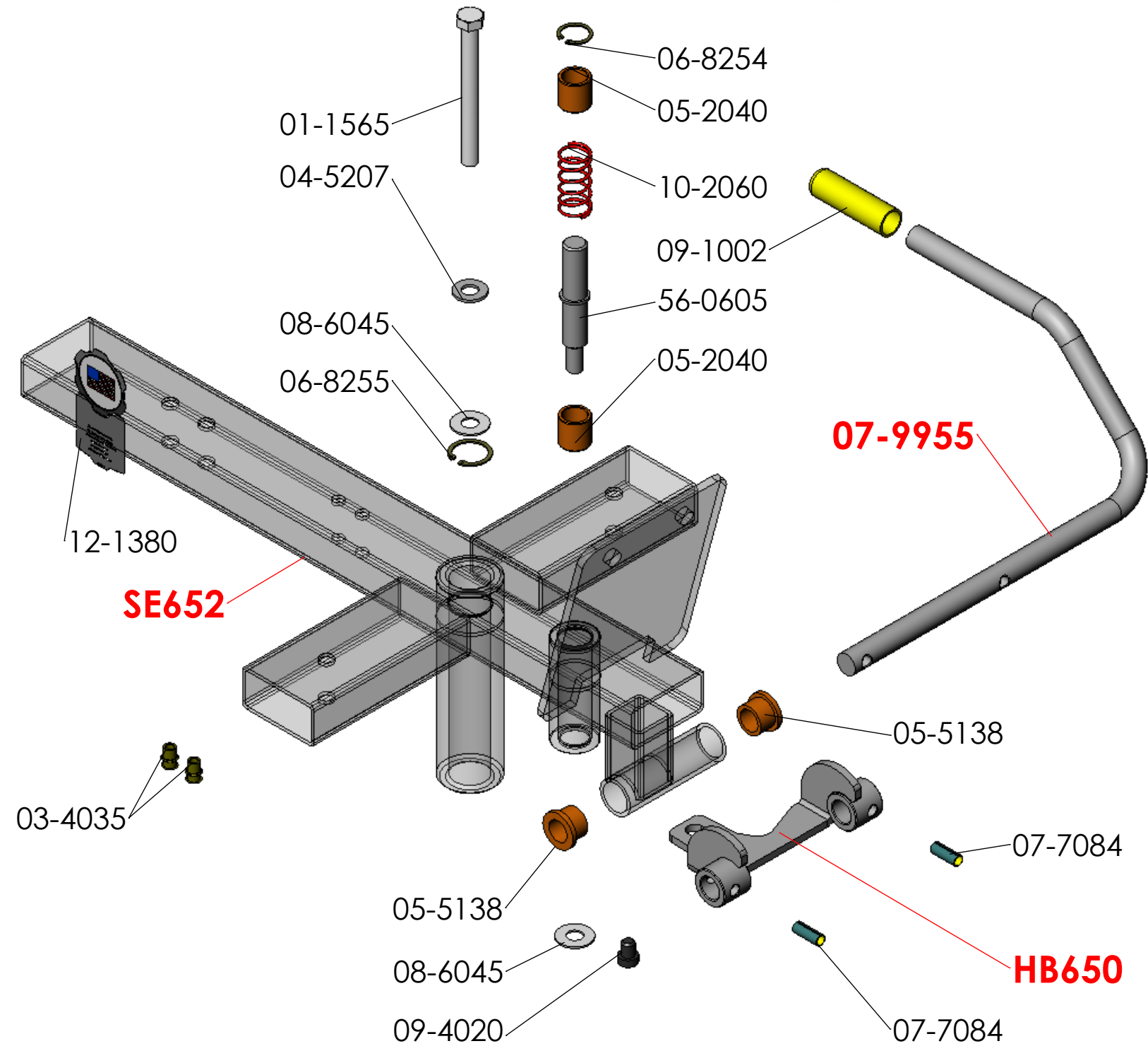


Number	Nitro Plus/QTY.	DESCRIPTION
02-3015	2	SELF THREADING x 3/4" LENGTH ROUND HEAD PHILLIPS SCREW
02-4071	8	BLACK SHIELD SCREW 1/4-20 x 3/4" PHILLIPS
02-4117	3	SCREW SHCS , 1/2 -13 UNC x 1 1/4
02-6057	1	SCREW, SET, 3/8 -16 UNC x 3/4 WITH LOCK
03-1035	2	3/8" Lock Nut
03-1055	4	1/2" Nylon Insert Lock Nut-Thin
03-1067	2	5/8" Lock Nut
03-2020	2	1/4" Lock Nut
03-4030	2	1/4-20 INSERT 1/2" LONG
03-4060	6	1/4-20 CLIP NUT
05-2035	2	BRASS BUSHING 2 X 2 1/4 X 1 1/4
06-8277	4	25mm Inv. Ext. Snap Ring
07-1160	7	Roller Bearing 7516
07-5568	1	IDLER PULLEY SPACER
07-9814	1	LINKAGE BUSHING
07-9934	1	RT PLASTIC SEAT SPACER
07-9935	1	MOVEMENT ARM AXLE
07-9936	1	PULLEY SHIELD
07-9937	4	STOP SLEEVE
07-9938	2	STOP SPACER, 2 1/2
07-9939	1	STOP SPACER, 1 1/2"
07-9954	1	POINTER
07-9957	1	IDLER ROLLER
07-9958	1	STOP SPACER, 2
07-9959	2	STOP SPACER
08-6075	1	LINKAGE SPACER
09-2060	4	1 1/2 X 3 11 GA FRAME PLUG
09-2070	1	2 X 2 11 GA FRAME PLUG
09-2090	1	2 X 3 X 11 GA FRAME PLUG

Number	Nitro Plus/QTY.	DESCRIPTION
09-3055	1	2 X 4 11 GA FRAME PLUG
09-4004	2	MOLDED UPH. ROLLER END CAP
09-5046	2	Nitro Plus Footpad
09-8323	2	2" MOLDED PULLEY
09-8327	1	REDIRECTIONAL PULLEY 3"
09-8330	1	REDIRECTIONAL PULLEY 4"
12-1562	1	DECAL, SEAT POINTER
14-1405	1	RANGE INDICATOR SHIELD
14-5240	2	SHIELD BRACKET
18-0027 (151")	1	MECTROL BELT 1" (151")
56-0217	1	Clamp Belt ONE
56-0556	1	Foot Guard, SS, 21"
HB9	1	HB9
MA662	1	NITRO RT MOVEMENT ARM
MA663	2	RT PULLEY LEVER ASSY
SF653	1	NITRO ROTARY TORSO SEAT FRAME
UP8710	1	ROTARY TORSO SEAT BOTTOM
UP8730	1	RT BACK PAD
UP8740	2	UPHOLSTERY ROLLER
UP9195	1	UPH. ELBOW PAD S5AB
01-1561	1	1/2 -13 UNC x 2 Bolt
06-8210	2	Snap Ring, Internal, 2"
01-4031	2	1/4 -20 UNC x 3/4 Wiz Lock Bolt
01-4035	2	1/4 -20 UNC x 1 1/4 Wiz Lock Bolt
01-2230	3	5/8-11 UNC x 5 Bolt
06-8230	4	Snap Ring, 1" External (no inventory)
02-9220	4	3/8 -16 UNC x 1 1/4 Bolt
01-1565	2	1/2 -13 UNC x 5 Bolt
02-9071	2	3/8 -16 UNC x 3 3/4 Bolt
SE652	1	NIRO RT SEAT ASSY

**S3-S5RT SF653
SEAT ASSEMBLY
Parts Diagram**

Number	Nitro Plus/QTY.	DESCRIPTION
01-1565	1	1/2 -13 UNC x 5 Bolt
03-4035	2	1/4-20 INSERT 1 1/16" LONG
04-5207	1	WASHER, FLAT, 1/2" SAE
05-5138	2	IGUS FLANGE .75 ID x 1.0 OD x 0.75L
05-2040	2	HEADLESS BRASS BUSHING
06-8254	1	Snap Ring, Internal, 1"
06-8255	1	Snap Ring, Internal, 1 1/4"
07-7084	2	3/8 X 1 ROLL PIN
07-9955	1	SEAT RELEASE HANDLE
08-6045	2	WASHER, NYLON 1 3/16
09-1002	1	.750 ID X 3" CLOSED END
09-4020	1	BUMPER, RB5 1/2" FLAT
10-2060	1	SPRING COMPRESSION
12-1380	1	DECAL PATENT MEDFIT MADE IN USA
56-0605	1	PLUNGER PIN
HB650	1	NITRO RT SEAT RELEASE
SE652	1	NIRO RT SEAT ASSY



Service Kits		
Item #	Description	Date
95-0686	Seat kit S3/S5/S9RT (SE652, 05-2040 Upgrade)	Units built prior to 07-2014

S3-S5RT SE652
S3-S5RT SEAT
Parts Diagram

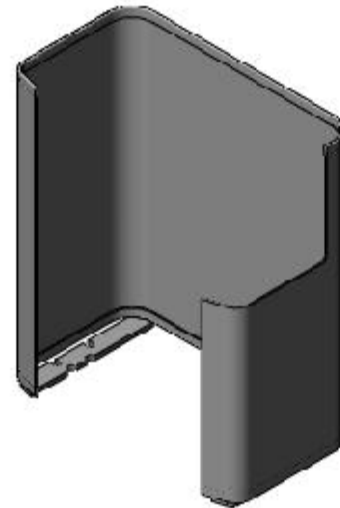


Red: PAINTED ITEMS
Blue: KITS

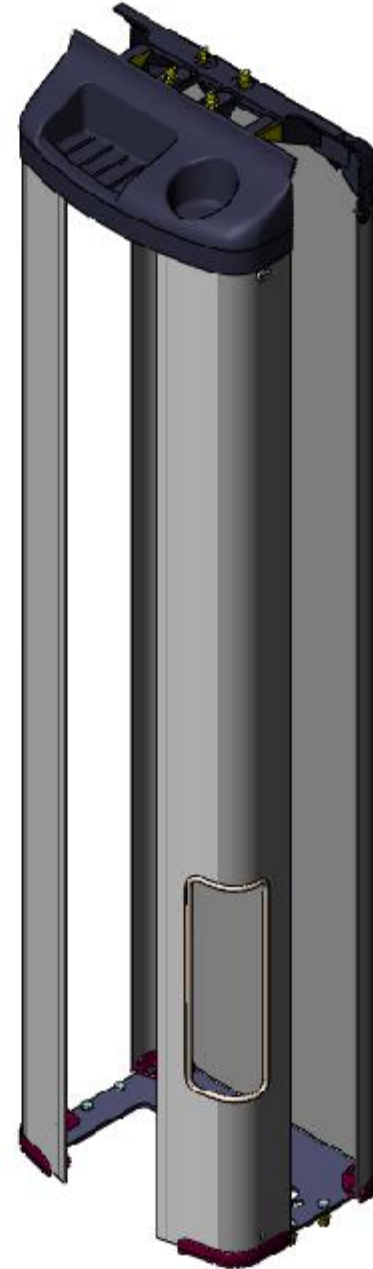
1. All labeled components are to be assembled before shipment unless otherwise noted.
2. All bearings are to be pressed in with force applied to outer ring only.
3. All hardware to be torqued to specs listed in chart below.
4. Special notes if any are shown below.



WEIGHTS
See Document
[95-0100](#)
for Exploded Diagrams



S3 SHIELDS
See Document
[95-0101](#)
for Exploded Diagrams



S5 SHIELDS
See Document
[95-0102](#)
for Exploded Diagrams



Add On Weights
See Document
[95-0103](#)
for Exploded Diagrams

Bolt Torque Specifications		
Size	Grade 5	Grade 8
	Torque (ft-lbs)	Torque (ft-lbs)
1/4-20	8	12
1/4-28	10	14
5/16-18	17	25
3/8-16	30	45
7/16-14	50	70
1/2-13	75	110
1/2-20	90	120
5/8-11	150	220
5/8-18	180	240